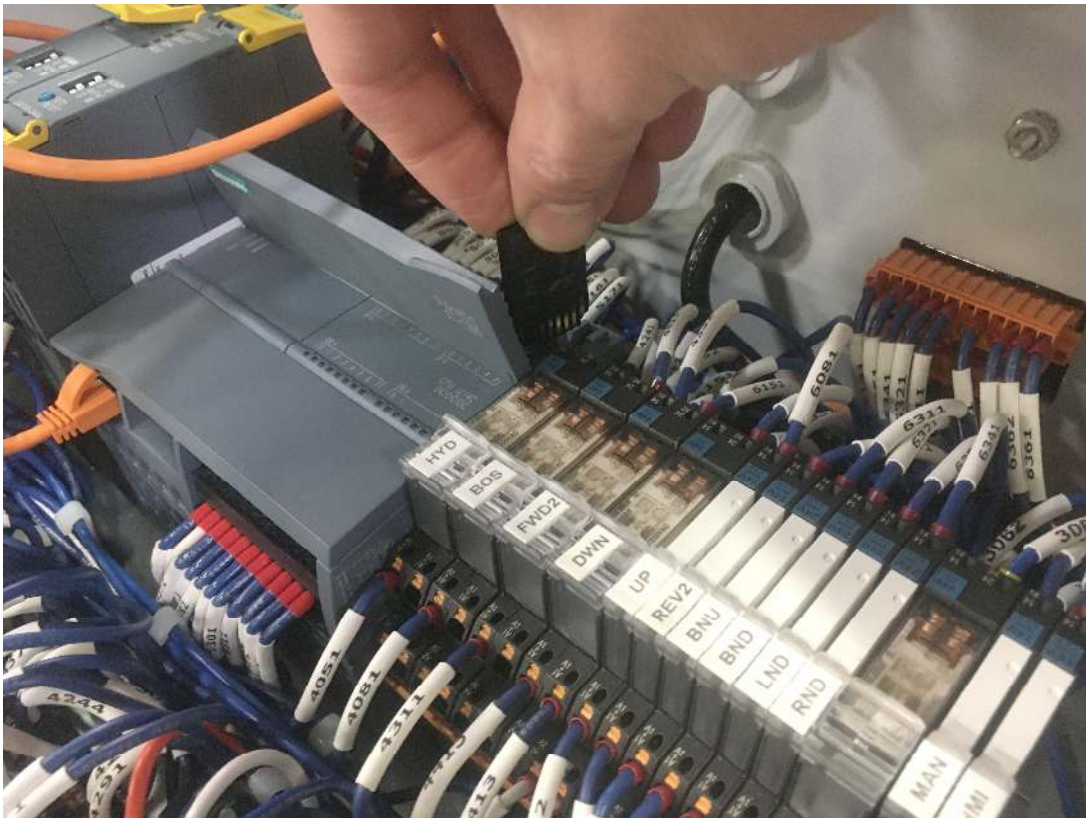


INSTRUCTIONS FOR UPDATING THE UNIQ CONTROLLER SOFTWARE FROM V1 TO V2

Part 1 – Update the PLC

1. Turn off the machine by rotating the power disconnect on the right side of the control panel.
2. Loosen the two screws at the bottom corners of the control panel and open the door.
3. Insert the SD card provided into the card slot of the PLC.



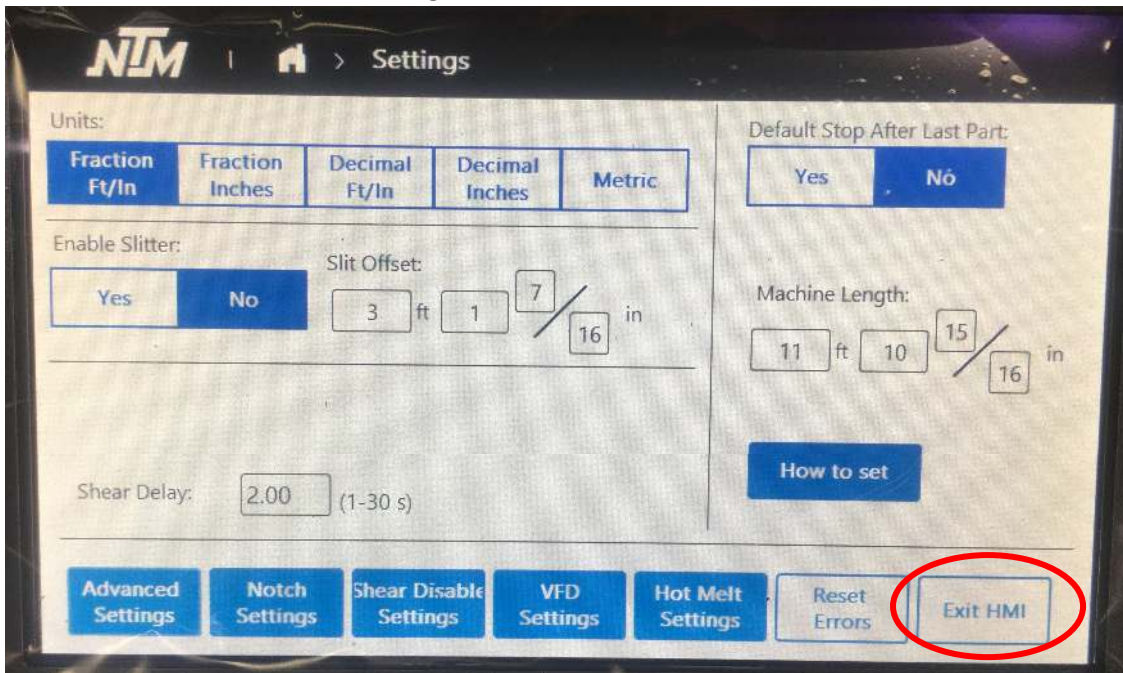
4. Turn the machine on by rotating the power disconnect.
5. After about 30 seconds, the RUN/STOP light should be steady yellow and the MAINT light should be flashing.
6. Turn the machine off by rotating the power disconnect.
7. Remove the SD card.
8. Turn the machine back on by rotating the power disconnect.
9. The lights will flash again. When the RUN/STOP light is steady green the programming is complete.
10. Close the control panel door and replace the screws.

Part 2 – Update the Touchscreen

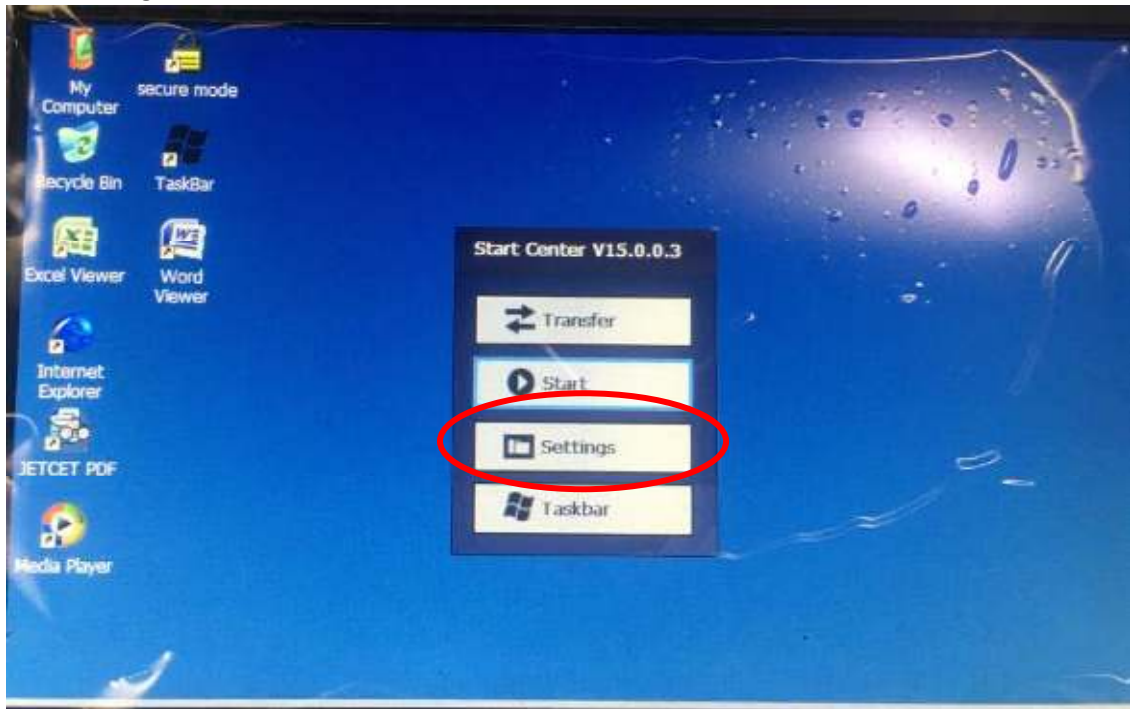
1. Insert the USB drive provided into the USB port on the front of the control panel.



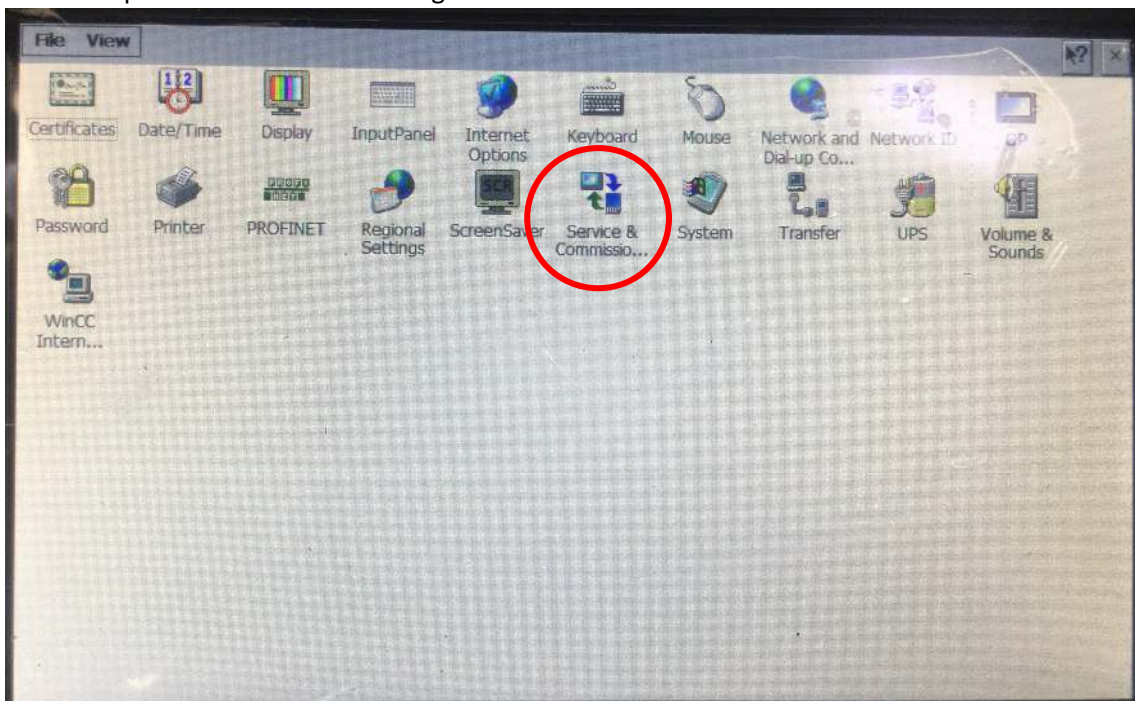
2. Move the AUTO/MAN switch to AUTO if it is not already in that position.
3. Press the Home button, then Settings, then Exit HMI.



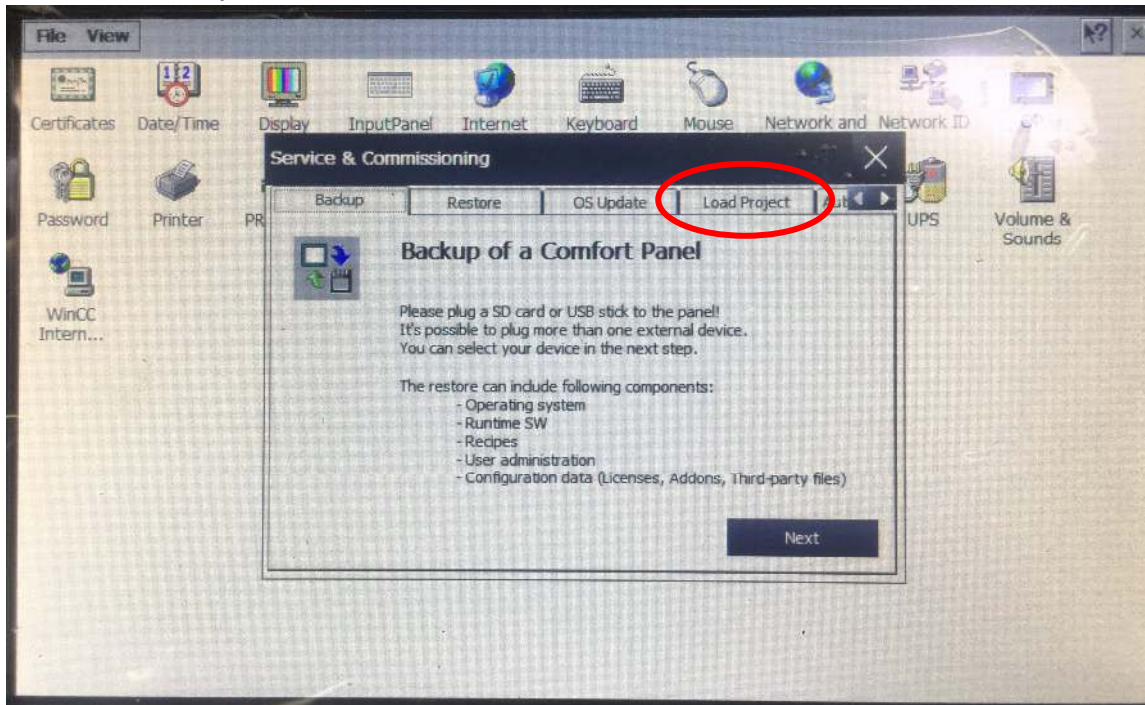
4. Press Settings.



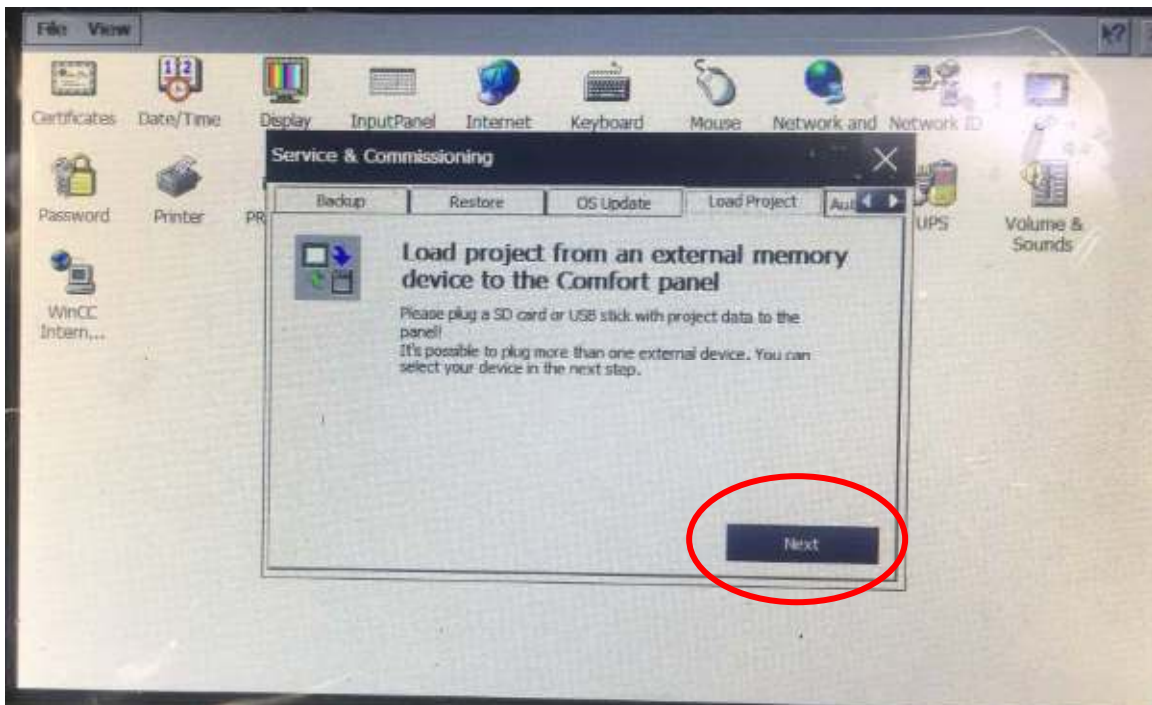
5. Double-tap Service & Commissioning.



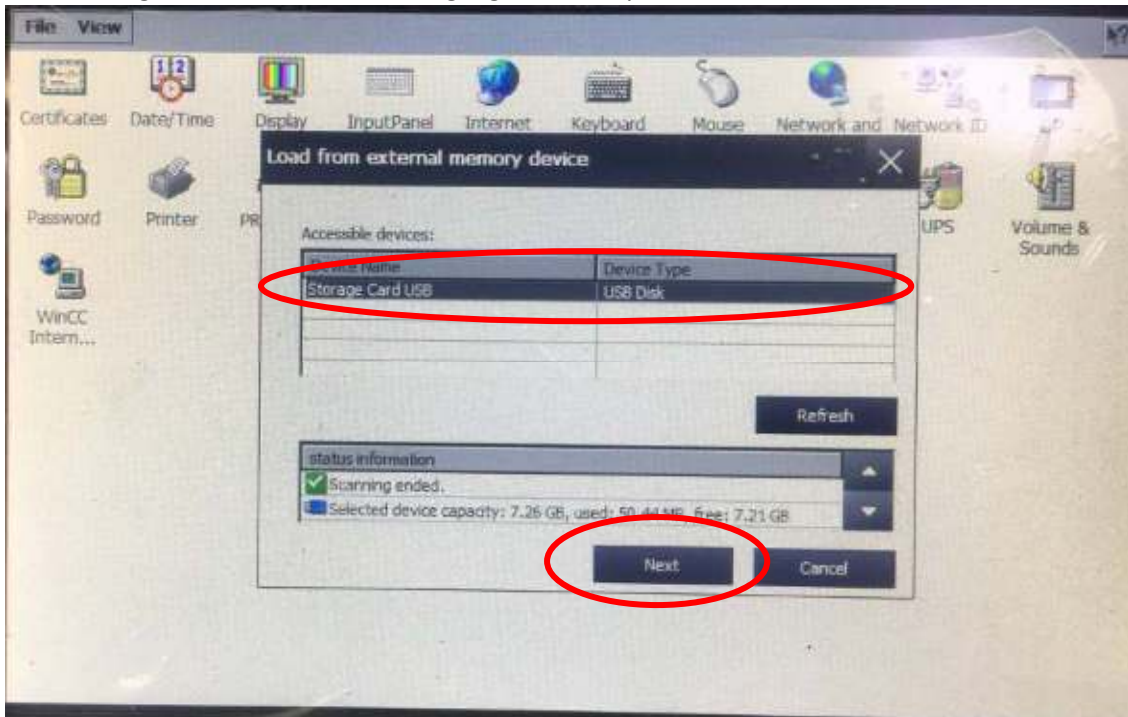
6. Press the Load Project tab.



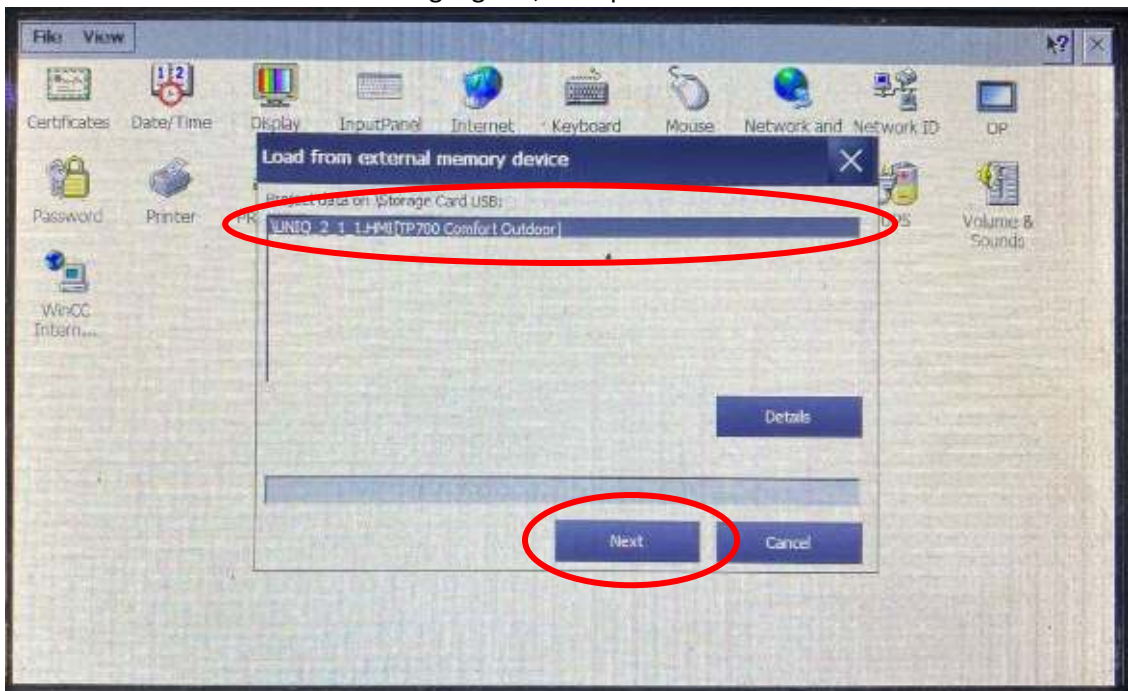
7. Press the Next button.



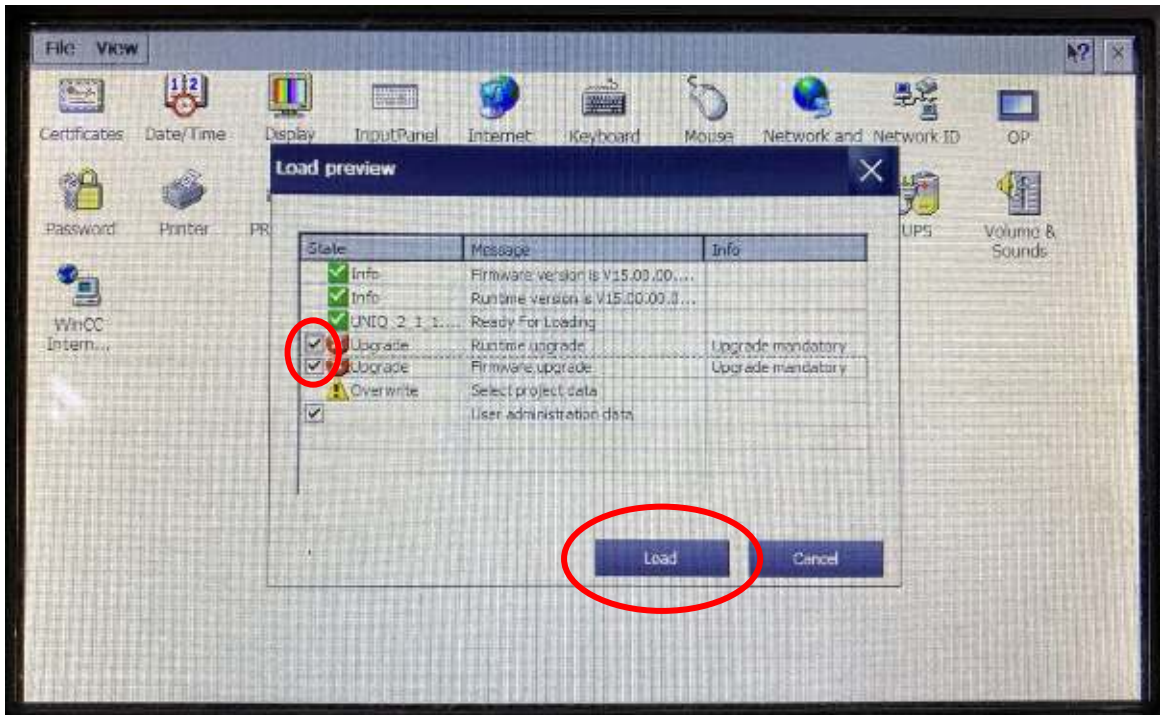
8. Press Storage Card USB in order to highlight it, then press Next.



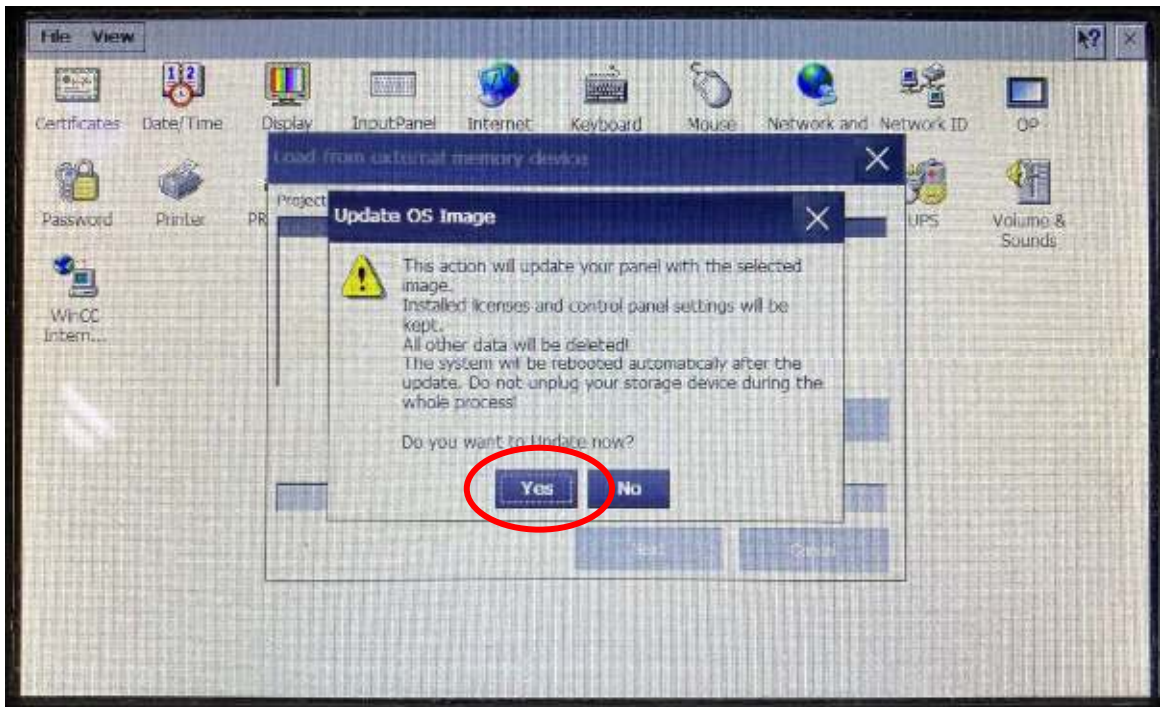
9. Press on the file listed in order to highlight it, then press Next.



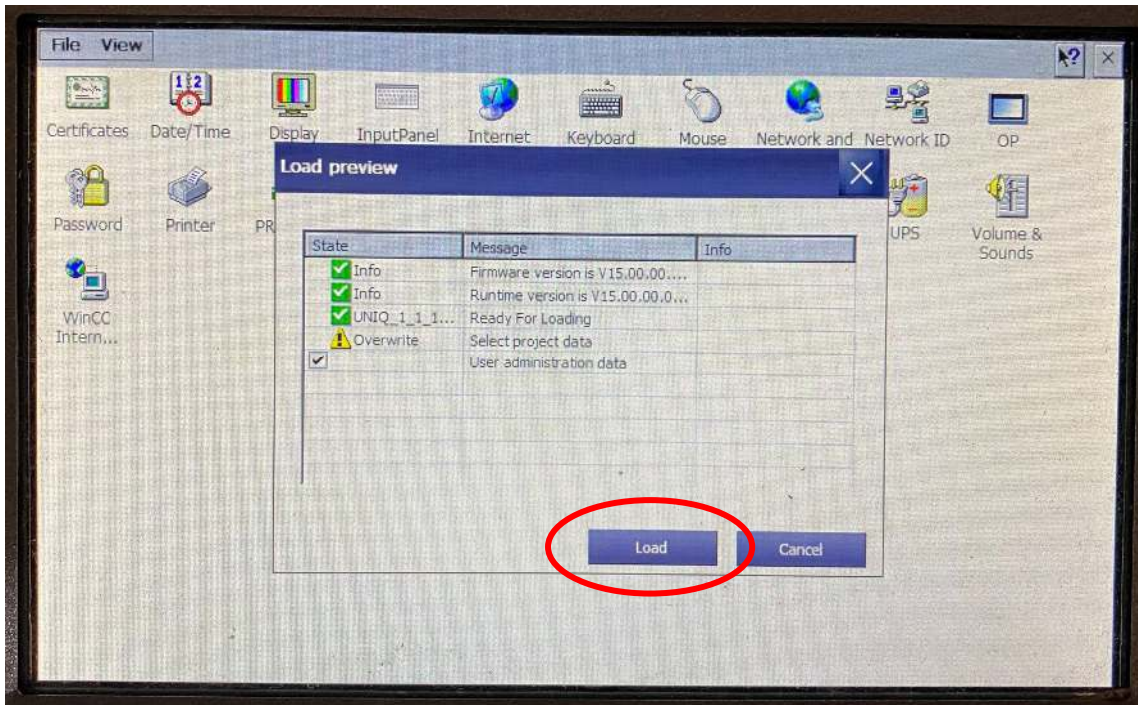
10. The following screen will appear asking to upgrade the firmware. Check the two boxes shown and press Load. A pencil eraser works well for pressing the small check boxes. (Note – it will still be possible to go back to Version 1 even after the upgrade.)



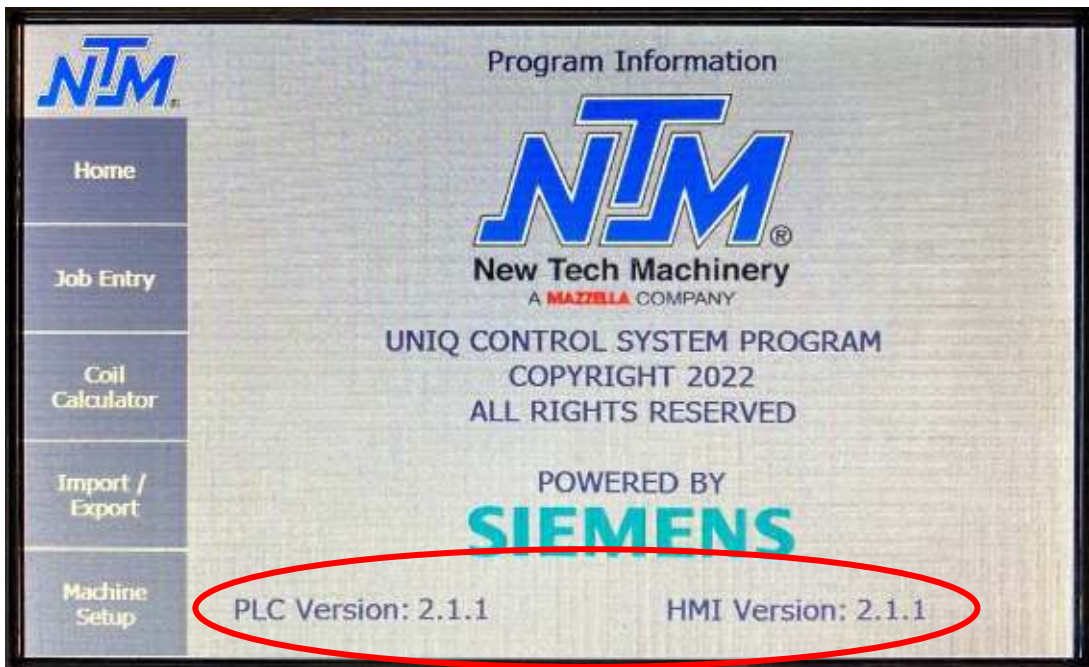
11. Press Yes on the next window.



12. Press the Load button.



13. Once it's finished loading the program, the touchscreen will restart. Verify that the version numbers in the bottom of the screen are correct.



14. If the USB drive and SD card were from New Tech Machinery, please mail them back in the stamped, addressed envelope provided. If you used the USB drive and SD card that were inside the control panel then put them back for later use.